

# RACK CASTERS

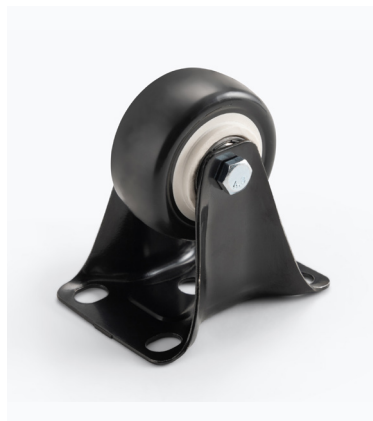


RKD1000C / 14996



## FEATURES AND BENEFITS

Transform your stationary rack rig into a mobile powerhouse with the RKD1000C Rack Casters. Engineered for convenience, these castors seamlessly attach to the bottom of any On-Stage RKD Series Knock Down Wall Mount Rack, providing unparalleled mobility without compromising stability. Crafted with durability in mind, the RKD1000C Castors are designed to withstand the rigors of professional use. The four castors ensure smooth and effortless movement, allowing you to navigate your rack setup within your studio or on stage. Whether you're a musician, audio engineer, or content creator, these castors add a new dimension of versatility to your equipment. Installation is a breeze, ensuring a hassle-free experience. Simply mount the castors to the pre-drilled holes on the RKD Series Rack, and you're ready to roll. The secure attachment guarantees a stable and secure foundation for your valuable gear, giving you the freedom to adapt your workspace to your creative needs. Enhance your work process and ensure each performance, session, or recording flows effortlessly with the RKD1000C Rack Castors. Give your equipment the liberty to move in sync with your creativity.



## SPECIFICATIONS

**Construction:** Steel and plastic

**Mounts:** Screws