

ON THE GO!

UTILITY CART
UTC2200
(PAGE 1)

On-Stage



COMPACT UTILITY CART
UTC1100

Application: Gear transportation	Weight Capacity: 330 lbs.
Compact Size: 26" (L) x 11.5" (W) x 7" (H)	Extended Size: 38.5" (L) x 11.5" (W) x 31.5" (H)
Front Wheel Size: 3"	Rear Wheel Size: 6"
Weight: 24.3 lb	



AWARD-WINNER

UTILITY CART
UTC2200

Application: Gear transportation	Weight Capacity: 485 lbs.
Compact Size: 18" (W) x 28.5" (L)	Extended Size: 18" (W) x 42.5" (L)
Platform Bed Height: 10.5"	Handle Height: 31"



ALL-TERRAIN UTILITY CART
UTC5500

Application: Gear transportation	Weight: 34.6 lbs.
Compact Dimensions: 30" (L) x 13.6" (W) x 11.2" (H)	Extended Dimensions: 52" (L) x 13.6" (W) x 37" (H)
Weight Capacity: 550 lb	Front Wheel Size: 8"
Rear Wheel Size: 10"	

AMPLIFIER, MIXER, AND RACK / CARTS



UTILITY CART TRAY
UCA1500

Application: Mounts to the handles of On-Stage utility carts to create a workstation, table, or shelf

Surface Dimensions: 36" (L) x 17" (W) **Thickness:** 1.2 mm

Weight Capacity: 80 lbs. **Weight:** 7.5 lbs.

Color: Black



UTILITY CART HANDLE BAG
UCB1250

Construction: Heavy-duty nylon **Straps:** Hook and loop

Dimensions: 26" (L) x 12" (W) x 6" (D) **Color:** Black

For Use With: On-Stage UTC2200 and UTC5500 Utility Carts



UTILITY CART BAG
UCB2500

Construction: Heavy-duty nylon **Straps:** Black

Dimensions: 40" (L) x 12" (W) x 20" (H) **Color:** Black

For use with: On-Stage UTC2200 and UTC5500 Utility Carts



FOLDABLE TILTBACK AMP STAND
RS4000

Application: Small amps / practice amps **Weight Capacity:** 100 lbs.

Upper Back Arm Length: 14" **Lower Arm Length:** 8"

Floor Dimensions: 12" (W) x 18" (D) **Construction:** Steel

Tubing: 0.75" **Color:** Black



AWARD-WINNER

TILTBACK TRIPOD AMP STAND
RS7500

Application: Stage / studio amps and monitors **Weight Capacity:** 100 lbs.

Height Adjustment: 8"-10" (support arm height above floor) **Support Arm Lengths:** 7.32"

Back Bumper Height Adjustment: 19"-36" **Angle Adjustment:** 95°-110°

Mic Mount Height Adjustment: 23"-37" **Construction:** Steel

Folded Dimensions: 5" (W) x 4.5" (H) x 26.5" (L) **Color:** Black



AMP STAND WITH BOOM ARM
RS7501

Application: Stage or studio amps and monitors / amp miking **Weight Capacity:** 100 lbs.

Height Adjustment: 8"-10" (support arm height above floor) **Angle Adjustment:** 95°-110°

Back Bumper Height Adjustment: 19"-36" **Amp Support Arms Length:** 7.32"

Mic Mount Height Adjustment: 23"-37" **Boom Arm Size:** 22" boom arm with 7" adjustable mini boom

Boom Arm Tubing: 16 mm **Color:** Black

Folded Dimensions: 5" (W) x 4.5" (H) x 26.5" (L)



FOLDABLE TILT-BACK AMP STAND
RS6000

Weight Capacity: 120 lbs. **Tubing:** 0.75" x 0.75"

Base Dimensions: 14" (W) x 21.5" (D) **Construction:** Steel

Upper Back Arm Length: 18" **Color:** Black

Lower Arm Length: 12"



TILT-BACK AMP STAND
RS7000

Weight Capacity: 150 lbs. **Base Spread:** 15.5"

Height Adjustment: 17"-24" **Width:** 12"

Upper and Lower Arm Length: 12" **Arm Spread:** 13"

Construction: Steel



TABLETOP RACK STAND
RS7030

Application: 12-space rack **Weight Capacity:** 75 lbs.

Height: 23" **Width:** 19.5"

Depth: 14" **Tubing:** 15 mm x 30 mm

Construction: Steel **Color:** Black



PRO TILTBACK AMP STAND
RS7705

Application: Stage / studio amplifiers and monitors **Arm Width:** 12"

Weight Capacity: 90 lbs. **Arm Depth:** 11"

Base Spread: 17" **Construction:** Steel



MOBILE EQUIPMENT STAND

MIX-400V2

Application: Holds mixers, small-to-midsize audio gear, and 1U rack-mount components

Height Adjustment: 28"–38"

Platform Length Adjustment: 12"–15.5"

Construction: Steel / plastic

Weight Capacity: 88 lbs.

Platform Width Adjustment: 14.5"–21.5"

Base Spread: 23"



PACK OF RACK SCREWS

WSR7025 / 25 Pack

Application: Secures rack-mount gear to a rack

Dimensions: M5, 12 mm

Construction: Metal

Head type: Philips

Color: Black



NEW PRODUCT

AMP GLIDER

AG5000

Length Adjustment: 22"–29.5"

Width Adjustment: 7.5"–14"

Weight Capacity: 140 lbs.

Height: 4"

Frame Construction: Steel

Color: Black



1U LOCKING RACK DRAWER

RDL1000

Dimensions: 19" (L) x 14" (W) x 1.7" (H)

Construction: Steel

Size: 1U

Color: Black



3U LOCKING RACK DRAWER

RDL3000

Dimensions: 19" (L) x 14" (W) x 5.1" (H)

Construction: Steel

Size: 3U

Color: Black



2U LOCKING RACK DRAWER

RDL2000

Dimensions: 19" (L) x 14" (W) x 3.5" (H)

Construction: Steel

Size: 2U

Color: Black



4U LOCKING RACK DRAWER

RDL4000

Dimensions: 19" (L) x 14" (W) x 6.7" (H)

Construction: Steel

Size: 4U

Color: Black



1U LOCKING RACK DRAWER (SHALLOW)

RDLS1000

Dimensions: 19" (L) x 9.5" (W) x 1.7" (H)

Construction: Steel

Size: 1U (Shallow)

Color: Black



3U LOCKING RACK DRAWER (SHALLOW)

RDLS3000

Dimensions: 19" (L) x 9.5" (W) x 5.1" (H)

Construction: Steel

Size: 3U (Shallow)

Color: Black



2U LOCKING RACK DRAWER (SHALLOW)

RDLS2000

Dimensions: 19" (L) x 9.5" (W) x 3.5" (H)

Construction: Steel

Size: 2U (Shallow)

Color: Black



4U LOCKING RACK DRAWER (SHALLOW)

RDLS4000

Dimensions: 19" (L) x 9.5" (W) x 1.7" (H)

Construction: Steel

Size: 4U (Shallow)

Color: Black


1U ADAPTABLE RACK DRAWER FOAM

RDF1000

Dimensions: 16.3" (W) x 15" (D)

Size: 1U

Construction: Medium-density foam

Color: Gray


3U ADAPTABLE RACK DRAWER FOAM

RDF3000

Dimensions: 16.3" (W) x 15" (D)

Size: 3U

Construction: Medium-density foam

Color: Gray


1U BLANK RACK PANEL

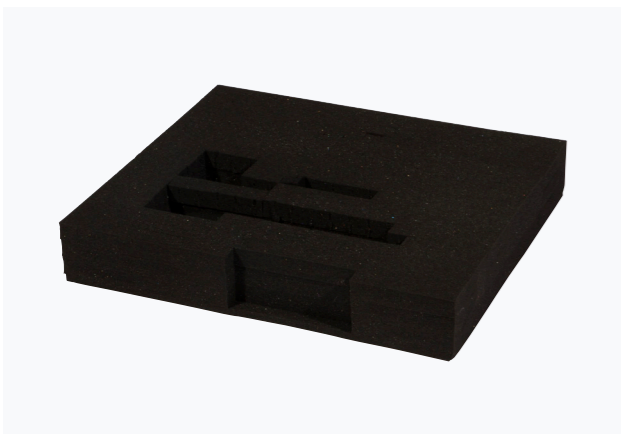
RPB1000

Thickness: 1.7 mm

Size: 1U

Construction: Steel

Color: Black


2U ADAPTABLE RACK DRAWER FOAM

RDF2000

Dimensions: 16.3" (W) x 15" (D)

Size: 2U

Construction: Medium-density foam

Color: Gray


4U ADAPTABLE RACK DRAWER FOAM

RDF4000

Dimensions: 16.3" (W) x 15" (D)

Size: 4U

Construction: Medium-density foam

Color: Gray


2U BLANK RACK PANEL

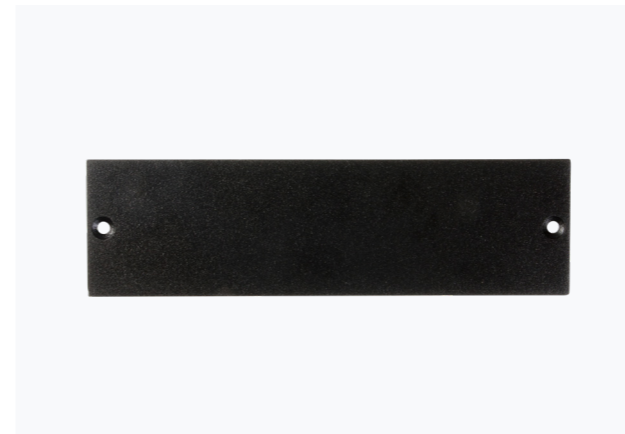
RPB2000

Thickness: 1.7 mm

Size: 2U

Construction: Steel

Color: Black


1U 500 SERIES BLANK RACK PANEL

RPB1500

Thickness: 3 mm

Size: 1U

Construction: Steel

Color: Black


3U BLANK RACK PANEL

RPB3000

Thickness: 1.7 mm

Size: 3U

Construction: Steel

Color: Black


4U BLANK RACK PANEL

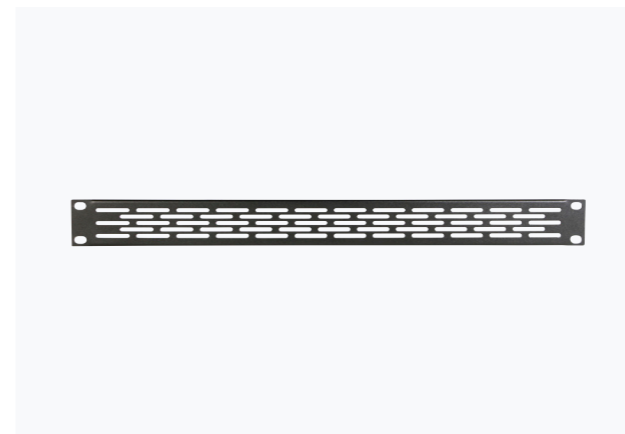
RPB4000

Thickness: 1.7 mm

Size: 4U

Construction: Steel

Color: Black


1U VENTED RACK PANEL

RPV1000

Thickness: 2 mm

Size: 1U

Construction: Steel

Color: Black


2U VENTED RACK PANEL

RPV2000

Thickness: 2 mm

Size: 2U

Construction: Steel

Color: Black


3U VENTED RACK PANEL

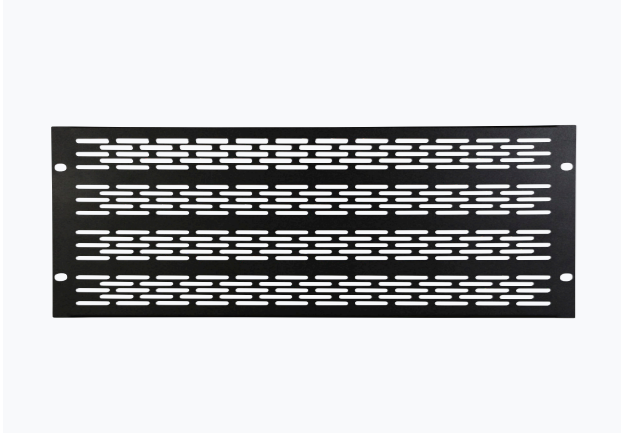
RPV3000

Thickness: 2 mm

Size: 3U

Construction: Steel

Color: Black



4U VENTED RACK PANEL

RPV4000

Thickness: 2 mm	Size: 4U
Construction: Steel	Color: Black



1U RACK BRUSH PANEL

RPBR1000

Thickness: 1.7 mm	Size: 1U
Construction: Steel / nylon	Color: Black



2U RACK BRUSH PANEL

RPBR2000

Thickness: 1.7 mm	Size: 2U
Construction: Steel / nylon	Color: Black



ADJUSTABLE TOP-MOUNT RACK SHELF

RSU1000

Application: Holds mixers, laptops, and other non-rack-mountable devices in a rack	Depth: 17.5"
Width Adjustment: 8"-15" (can hold 17" gear with inner locking brackets removed)	
Tray Width (not including mounting lip): 17.2"	Width (including mounting lip): 19"



16-24 CHANNEL MIXER DUST COVER

MDA7016

Length Adjustment: 27"-34"	Construction: Spandex
Width Adjustment: 19"-23"	Color: Black
Depth: 12"	



32-48 CHANNEL MIXER DUST COVER

MDA7032

Length Adjustment: 47"-53"	Construction: Spandex
Width Adjustment: 24"-29"	Color: Black
Depth: 12"	



NEW PRODUCT

6U WALL-MOUNT KNOCK-DOWN RACK

RKD6000

Dimensions: 21.65" (L) x 17.72" (W) x 14.57" (H)	Rack Space: 6U
Rack Mounting Holes: #10-32	Color: Black
Construction: Steel	
Usable Depth (Rail to Rail): 14"	



NEW PRODUCT

9U WALL-MOUNT KNOCK-DOWN RACK

RKD9000

Dimensions: 21.65" (L) x 17.72" (W) x 19.85" (H)	Rack Space: 9U
Rack Mounting Holes: #10-32	Color: Black
Construction: Steel	
Usable Depth (Rail to Rail): 14"	



NEW PRODUCT

12U WALL-MOUNT KNOCK-DOWN RACK

RKD1200

Dimensions: 21.65" (L) x 17.72" (W) x 24.41" (H)	Rack Space: 12U
Rack Mounting Holes: #10-32	Color: Black
Construction: Steel	
Usable Depth (Rail to Rail): 14"	



NEW PRODUCT

CASTERS FOR RKD SERIES RACKS

RKD1000C

Mounting Style: Screws	Construction: Steel
Works With: On-Stage RKD6000, RKD9000, & RKD1200	





NEW PRODUCT
AWARD-WINNER
ON-STAGE ORIGINAL

GUITAR WORKSTATION - ROSEWOOD
GWS5000RB

Amp Shelf Dimension (L x W x D): 24.5" x 12.5" x 20.5"

Pedal Board Dimension (L x W x D): 24" x 8" x 3.5"

Top Shelf Dimension (L x W x D): 24.5" x 1.5" x 3"

Weight Capacity: 80 lbs.

Cabinet Construction: MDF

Includes: Hook-and-loop strips

Color: Rosewood



NEW PRODUCT
AWARD-WINNER
ON-STAGE ORIGINAL

GUITAR WORKSTATION - BLACK
GWS5000B

Amp Shelf Dimension (L x W x D): 24.5" x 12.5" x 20.5"

Pedal Board Dimension (L x W x D): 24" x 8" x 3.5"

Top Shelf Dimension (L x W x D): 24.5" x 1.5" x 3"

Weight Capacity: 80 lb

Cabinet Construction: MDF

Includes: Hook-and-loop strips

Color: Black

